

# SP-3248V

## SP-3248V - Trailer Mounted Speed Indication Device

The SP-3248V is a battery / solar powered trailer mounted radar speed indication device with full matrix display. SP-3248V features a state of the art Houston doppler radar, V-Touch SP controller and Stealth Technology. Our speed indication device is designed to display real time speed information (k/ph) and feedback messages to the motoring public, reducing speeds and providing a safer environment. The SP-3248V is ideal for providing speed awareness in highway construction projects, school zones and other urban areas.



### HIGH DEFINITION DISPLAY CARDS

The SP-3248V features Ver-Mac's exclusive high definition display cards providing a sharper more detailed text and graphics display. The higher degree of clarity allows the SP-3248V to be more visible from a distance than other speed indication devices.

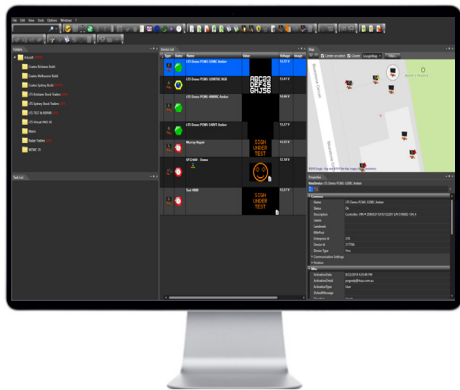


### V-TOUCH SP CONTROLLER

- **Easy to Read** - 95mm pressure sensitive black and white display screen with an intuitive interface
- **Intuitive Icons** - Quickly select speed parameters and blink option
- **Backlit Screen** - Perfect for night time use
- **Real Time Display** - View speed display, battery voltage level and other key elements
- **Message Library** - Over 30 custom messages and graphics
- **Stealth Mode** - No speed is displayed but data is still collected\*
- **Optional Warning Devices** - Easy to integrate flashing beacons, strobe lights, red/blue flashing bar and audible alarm

\* Requires data logger option

# SP-3248V



## JAMLOGIC FLEET MANAGEMENT SOFTWARE

Equip the SP-3248V with a high speed modem with GPS to monitor and collect data with JamLogic automation. All the data is stored in the JamLogic software.

- Schedule the modes and triggers in advance
- Run your own reports monthly, weekly, daily or custom plus export the reports to excel

## DATA LOGGER (OPTIONAL)

The data logger option allows you to collect average speed and number of vehicles approaching (directional). The data can be downloaded via a USB key at the trailer or remotely through JamLogic (modem option required).

## HOUSTON DOPPLER RADAR

- Picks up average speed and vehicle count
- Up to 2 lanes / directional
- No calibration necessary
- Integrated into the sign

## POWER SUPPLY CONFIGURATION

- **SOLAR PANELS** - provide maximum solar recharging all year round
- The standard battery/solar configuration is designed to run 12 months in most regions without manual charging

## DISPLAY

- Speed display panel: 810mm x 889mm
- Full matrix display: 32 x 48 pixels
- High definition display cards
- 1 LED per pixel
- Automatic brightness adjustment

## DIMENSIONS AND WEIGHT

- Overall length: 3200mm
- Overall width: 1600mm
- Travelling height: 2480mm
- Operating height: 3380mm
- Weight (approx.): 580kg

## OPTIONS (Other options available)

- Battery charger
- Data logger
- Modem with GPS
- Data plan (requires modem)

## HIGH QUALITY CONSTRUCTION

- Powder coated superior finish - impact, humidity, salt spray and rust resistant
- 4 levelling jacks - for stabilisation and easy deployment/transportation
- Removable tongue - reducing space for storage and anti-theft measure
- Hydraulic lift mechanism - for quick deployment
- Heavy duty plastic fenders - for durability and easy replacement
- Plastic battery box - to minimise battery corrosion
- Lockable control box - for security
- 51mm coupler - for easy towing

## STEALTH TECHNOLOGY



Cleverly hidden battery compartment  
- Deter thieves from stealing batteries



Long lasting sealed batteries - No maintenance required

## ADD A STATIC SIGN TO THE TRAILER (OPTIONAL)



## APPLICATIONS

- Law enforcement
- Speed awareness
- Traffic studies
- Smart work zones
- 1-year warranty on complete units
- 2-year warranty on Ver-mac manufactured electronics