

TRAILER MOUNTED VMS

PCMS548

The PCMS548 is a mini full-matrix trailer mounted portable variable message sign. It features the NTCIP compliant V-Touch controller, tilt and rotate solar panels, JamLogic fleet management software (modem required) and Stealth Technology. The unit combines energy efficient design with high quality construction to provide the most reliable and cost effective message sign on the market. PCMS548 is ideal for lower speed roadways and urban areas.



Product code: LED-VM-PCMS548VT

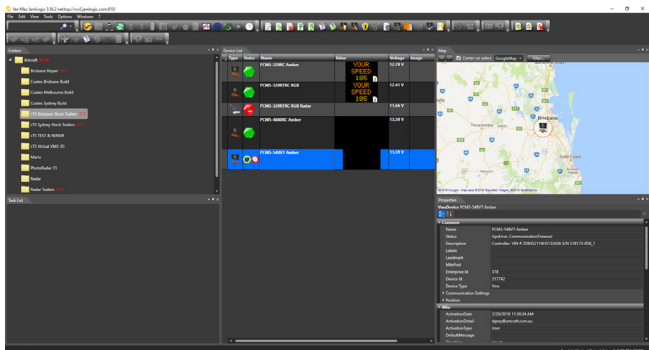


V-TOUCH CONTROLLER

The PCMS548 comes with the innovative V-Touch controller, the industry's most functional and easy to use controller.

- **NTCIP compliant**
- **Easy to Read** - 7-inch (178mm) colour LCD pressure sensitive display screen
- **User Friendly** - One click icon based menu items
- **Time Saving** - Create your own library of messages
- **Simple to Operate** - The intuitive point and go icons ensure quick and easy commands to display or edit messages
- **Additional Functionalities** - Scheduling, sign diagnostics, pin-protected security and much more

TRAILER MOUNTED VMS



JAMLOGIC FLEET MANAGEMENT SOFTWARE

Equip the PCMS548 with the high speed modem with GPS and maximise your productivity, efficiency and profitability, all remotely from your office or home. The JamLogic software is FREE and you get all the updates at no extra cost.

- Monitor, maintain and manage your signs from any PC, laptop, tablet or smartphone
- View your equipment in a list and GPS map view
- Change a message on one or more signs simultaneously with a simple click
- View your messages and battery voltages
- Group your signs in folders (by customer, location, project... the choice is yours)
- Receive e-mail or text alerts (low battery, cellular failure etc)

MARKETS

- City and county
- Department of Transport
- Special events (concerts, sporting, festivals)
- Law enforcement

DISPLAY

- Display panel: 1146mm x 2027mm
- Full matrix of 30 x 56 pixels
- 4 LEDs per pixel
- Up to 3 lines of 12 characters per line
- Display sign rotates 360 degrees for perfect setting
- Plug and play display modules for simplified maintenance

DIMENSIONS AND WEIGHT

- Overall length: 3565mm
- Overall width: 1791mm
- Travelling height: 2417mm
- Operating height: 4081mm
- Axle/suspension: 907kg
- Weight (approx.): 580kg

OPTIONS (Other options available)

- Battery charger
- Radar
- Data logger (requires radar)
- Tongue wheel jack

ENERGY-EFFICIENT DESIGN

- **TILT-AND-ROTATE SOLAR PANELS** - Panels tilt to a 45-degree angle to provide maximum solar recharging all year round
- Designed to run 12 months in most regions without manual charging
- Various configurations of solar panels and batteries are available to meet your needs

HIGH QUALITY CONSTRUCTION

- **Powder coated superior finish** - Impact, humidity, salt spray and rust resistant
- **4 levelling jacks** - For stabilisation and easy transportation
- **Electro-hydraulic lift mechanism** - For quick and effortless deployment
- **Heavy-duty plastic fenders** - For durability and easy replacement
- **Plastic battery boxes** - To minimise battery corrosion
- **Lockable control box** - for security
- **50mm tow ball housing** - For easy towing

STEALTH TECHNOLOGY



Cleverly hidden battery compartment - Deter thieves from stealing batteries



Long lasting sealed batteries - No maintenance required



- 1-year warranty on complete trailers
- 2-year warranty on Ver-mac manufactured electronics