

TRAILER MOUNTED VMS

PCMS320RTRC

State of the art full-matrix trailer-mounted portable variable message sign that comes with the RGB COLOUR RAINBOW TECHNOLOGY. It's the industry's first PCMS with over 16,000 colours to design or create special colour messages on the sign. PCMS320RTRC also features tilt and rotate solar panels plus the JamLogic fleet management software. This unit is built with the highest quality construction to provide the most reliable colour message sign on the market. PCMS320RTRC is the perfect model to use in special events and portable advertising.

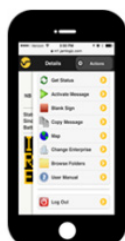
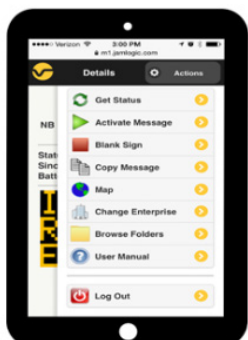


Product code: LED-VM-PCMS320RTRC

RAINBOW TECHNOLOGY

Ver-Mac's Rainbow Technology creates over 16,000 colours that can be displayed in a message or in a graphic design. The red, green and blue (RGB) hues are mixed together to create colours. Choose from a standard list or create your own by utilising the colour wheel. The sky is the limit with Rainbow Technology!

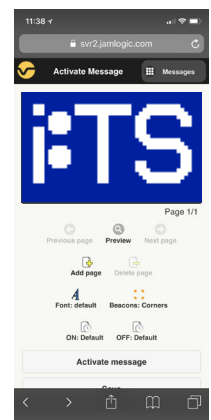
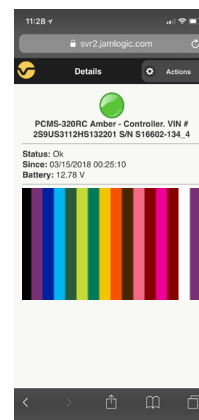
JAMLOGIC WEB APPLICATION FOR SMART DEVICES



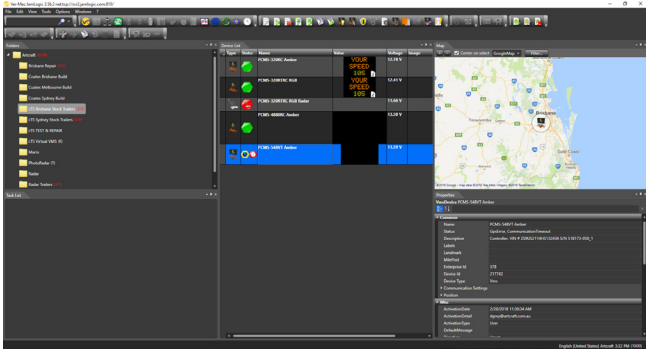
State of the art technology replacing the need for an onboard controller. Change your message, set parameters, check battery status and so much more from any smart device. There are two options for connectivity:

- Direct Wifi connection within range of the sign
- Logging in to the web based internet application

Contains all of the menu options you can see via your pc or laptop. Couldn't be easier!



TRAILER MOUNTED VMS



JAMLOGIC FLEET MANAGEMENT SOFTWARE

Our high speed modem with GPS allows you to maximise your productivity, efficiency and profitability, all remotely from your office or home. The JamLogic software is FREE and you get all the updates at no extra cost.

- Monitor, maintain and manage your signs from any PC, laptop, tablet or smartphone
- View your equipment in a list and GPS map view
- Change a message on one or more signs simultaneously with a simple click
- View your messages and battery voltages
- Group your signs in folders (by customer, location, project... the choice is yours)
- Receive e-mail or text alerts (low battery, cellular failure etc)

MARKETS

- Highway maintenance / construction
- Department of Transport
- Special events (concerts, sporting, festivals)
- Law enforcement
- Business advertising

DISPLAY

- Display panel: 1680mm x 2648mm
- Rainbow Technology (up to 16,000 colours displayed)
- Full matrix of 30 x 48 pixels
- 10 LEDs per pixel (4 red, 3 green, 3 blue)
- Up to 3 lines of 8 characters per line
- Default character: 5 x 7 pixel of 330mm
- Display sign rotates 360 degrees for perfect setting
- Plug and play display modules for simplified maintenance

DIMENSIONS AND WEIGHT

- Overall length: 3829mm
- Overall width: 2096mm
- Travelling height: 2845mm
- Operating height: 4705mm
- Axle/suspension: 1588kg
- Weight (approx.): 1080kg

OPTIONS (Other options available)

- Battery charger
- Radar
- Data logger (requires radar)

POWER SUPPLY CONFIGURATION

- **TILT-AND-ROTATE SOLAR PANELS** - Panels tilt to a 45-degree angle to provide maximum solar recharging all year round
- Various configurations of solar panels and batteries are available to meet your needs

HIGH QUALITY CONSTRUCTION

- **Powder coated superior finish** - Impact, humidity, salt spray and rust resistant
- **4 levelling jacks** - For stabilisation and easy transportation
- **Electro-hydraulic lift mechanism** - For quick and effortless deployment
- **Heavy-duty plastic fenders** - For durability and easy replacement
- **Plastic battery boxes** - To minimise battery corrosion
- **Lockable control box** - for security
- **50mm tow ball housing** - For easy towing



Long lasting sealed batteries - No maintenance required



- 1-year warranty on complete trailers
- 2-year warranty on Ver-mac manufactured electronics