

TRAILER MOUNTED VMS

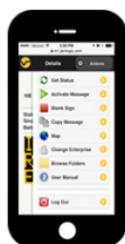
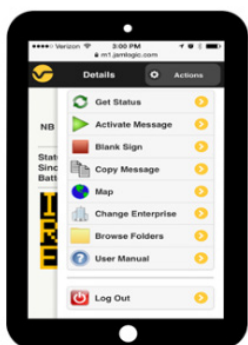
PCMS320RC

State of the art mid-size full-matrix trailer-mounted portable variable message sign. Features the Opti Power lens, tilt and rotate solar panels, Jamlogic fleet management software (modem required) and Stealth Technology. This unit combines energy-efficient design and high-quality construction to provide the most reliable and cost-effective message signs on the market. Built with a compact design which makes it perfect for use on highway construction projects where space is limited as well as urban areas.



Product code: LED-VM-PCMS320RC

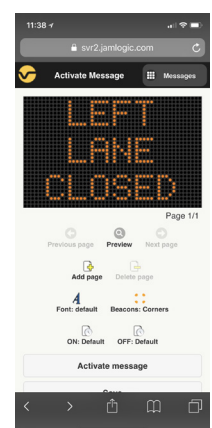
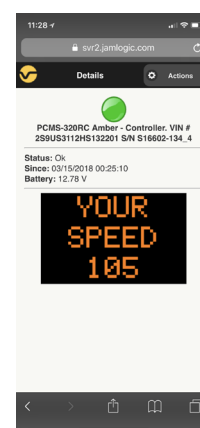
JAMLOGIC WEB APPLICATION FOR SMART DEVICES



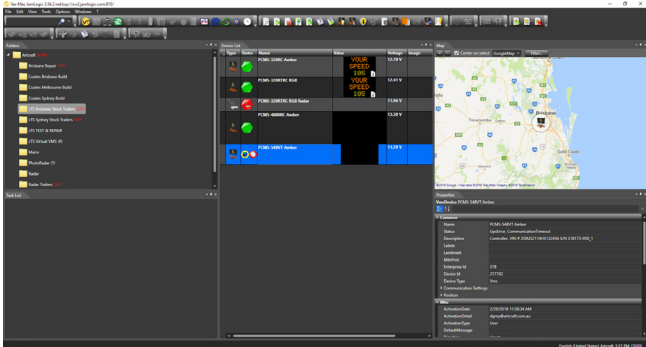
State of the art technology replacing the need for an onboard controller. Change your message, set parameters, check battery status and so much more from any smart device. There are two options for connectivity:

- Direct Wifi connection within range of the sign
- Logging in to the web based internet application

Contains all of the menu options you can see via your pc or laptop. Couldn't be easier!



TRAILER MOUNTED VMS



JAMLOGIC FLEET MANAGEMENT SOFTWARE

Our high speed modem with GPS allows you to maximise your productivity, efficiency and profitability, all remotely from your office or home. The JamLogic software is FREE and you get all the updates at no extra cost.

- Monitor, maintain and manage your signs from any PC, laptop, tablet or smartphone
- View your equipment in a list and GPS map view
- Change a message on one or more signs simultaneously with a simple click
- View your messages and battery voltages
- Group your signs in folders (by customer, location, project... the choice is yours)
- Receive e-mail or text alerts (low battery, cellular failure etc)

MARKETS

- Highway maintenance / construction
- Department of Transport
- Special events (concerts, sporting, festivals)
- Law enforcement
- Smart work zone

DISPLAY

- Display panel: 1605mm x 2497mm
- Full matrix of 30 x 48 pixels
- 4 LEDs per pixel
- Up to 3 lines of 8 characters per line
- Display sign rotates 360 degrees for perfect setting
- Plug and play display modules for simplified maintenance

DIMENSIONS AND WEIGHT

- Overall length: 3747mm
- Overall width: 2096mm
- Travelling height: 2754mm
- Operating height: 4584mm
- Axle/suspension: 1588kg
- Weight (approx.): 939kg

OPTIONS (Other options available)

- Battery charger
- Radar
- Data logger (requires radar)

ENERGY-EFFICIENT DESIGN

- **OPTI POWER-LENS** - The encapsulated design maximizes each LED output to create bolder and brighter characters while utilising less energy
- **TILT-AND-ROTATE SOLAR PANELS** - Panels tilt to a 45-degree angle to provide maximum solar recharging all year round
- Designed to run 12 months in most regions without manual charging
- Various configurations of solar panels and batteries are available to meet your needs

HIGH QUALITY CONSTRUCTION

- **Powder coated superior finish** - Impact, humidity, salt spray and rust resistant
- **4 levelling jacks** - For stabilisation and easy transportation
- **Electro-hydraulic lift mechanism** - For quick and effortless deployment
- **Heavy-duty plastic fenders** - For durability and easy replacement
- **Plastic battery boxes** - To minimise battery corrosion
- **50mm tow ball housing** - For easy towing

STEALTH TECHNOLOGY



Cleverly hidden battery compartment - Deter thieves from stealing batteries



Long lasting sealed batteries - No maintenance required



- 1-year warranty on complete trailers
- 2-year warranty on Ver-mac manufactured electronics