

## TC1783 Flashing School Zone Signs

### Pricing Information

Aldridge Traffic Systems Intelligent Traffic Systems' suite of TC1783 flashing school zone sign products have been designed with distinctive elements and so have specific requirements for installation and commissioning as well as for ongoing monitoring and maintenance options. The following information is a guideline for tendering of the TC1783 signs.

Any further questions can be directed to Aldridge [ITSinfo@trafficltd.com.au](mailto:ITSinfo@trafficltd.com.au) or 1300 769 852.

### SIGN OPTIONS

i:TS has designed three sizes of flashing school zone signs to meet the various MUTCD requirements:

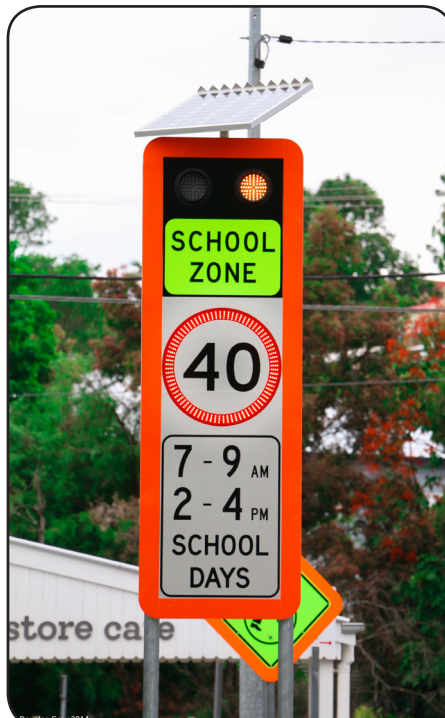
PRODUCT CODE	PRODUCT DESCRIPTION	PRICE WITH ONE YEAR WARRANTY
LED-ESZS-TC1783-A	R4-Q01A LED ENHANCED S/ZONE SIGN 600X1750MM CL1W	On request
LED-ESZS-TC1783-B	R4-Q01B LED ENHANCED S/ZONE SIGN 800X2400MM CL1W	On request
LED-ESZS-TC1783-C	R4-Q01C LED ENHANCED S/ZONE SIGN 1200X3500MM	On request
FREIGHT	FREIGHT CHARGE PER SIGN (for installations outside of the North Coast, Metropolitan & South Coast Districts).	On request

\*Note: Speed and times to be displayed on the sign is advised by the customer

**TC1783-A  
600 x 1750**



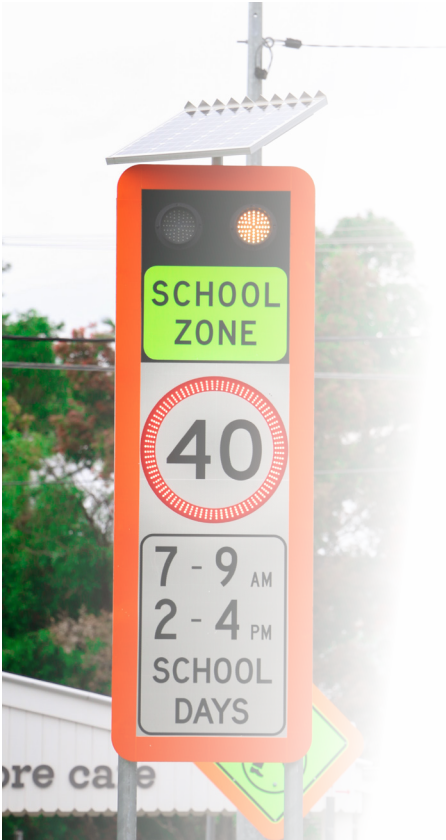
**TC1783-B  
800 x 2400**



**TC1783-C  
1200 x 3500**



## INSTALLATION & COMMISSIONING



The TC1783 signs have custom engineered footings for their unique weight and sail areas. Therefore, close attention needs to be paid to the footing and installation designs to mitigate against warranty and public safety concerns.

Aldridge utilises non-destructive vacuum excavation for its sign footing installations, supported by hand digging where required.

Footing and sign installation charges include resource costs for vacuum excavation, crange and traffic control and are determined from accurate information that is obtained through the **Aldridge Flashing School Zone Sign Enquiry Form**. This document is required to be completed in order to finalise fixed lump sum pricing and can be obtained from [ITSinfo@trafficltd.com.au](mailto:ITSinfo@trafficltd.com.au) or **1300 769 852**.

Prior to that, a Provisional Sum for a pair of TC1783 installations may be applied from anywhere between \$5,000, for the smallest signs installed on day works with good ground conditions and minimal traffic control requirements, right through to \$15,000 for the largest signs installed on night works with difficult ground conditions and complex traffic control requirements.

## PLANNED PREVENTATIVE MAINTENANCE

Aldridge offers an annual planned preventative maintenance service to keep on top of potential issues that cannot be detected through the remote monitoring service. From more common issues like damaged or vandalised sign faces, dirty or shaded solar panels, to less common issues like loose electronic connections, water ingress and pest infestation. It also allows for the resistance levels of the batteries to be tested, which gives a better indication of their health and life expectancy.

**Signs serviced and maintained by unauthorised agents during the warranty period will void the warranty.**



## REMOTE MONITORING OPTIONS

Aldridge's suite of TC1783 flashing school zone sign products are designed to be monitored remotely with software, developed by Aldridge and customised for this product, that is accessible through a secure web portal. So wherever there is internet connection, the signs can be monitored in near real time. It is used for fault reporting, trouble shooting from event log histories and pre-emptive calendar updating.

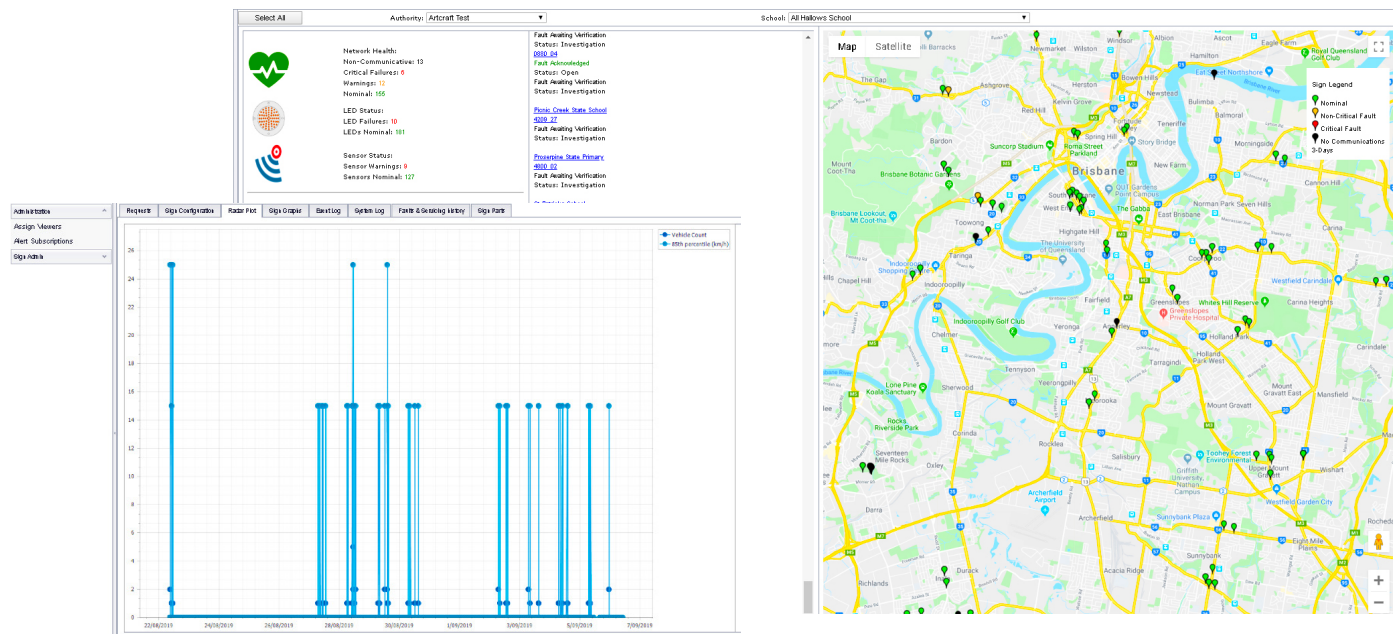
Remote monitoring helps to manage community complaints and expectations, provides detailed information and broader context for technicians to trouble shoot the faults before attending site and some faults can even be resolved remotely. It also dramatically reduces the response time to site by technicians.

Aldridge offers four remote monitoring options to accompany the TC1783 sale:

1	Ongoing monitoring by i:TS using web-based system	On request	Per Sign per Month
2	Ongoing monitoring by Customer using web-based system	On request	Annual Licence per Sign
3	Modem enabled signs that can be accessed remotely by i:TS by engagement but are not actively monitored by anyone	On request	Per Sign per Month
		On request	Per Enquiry
		On request	Per Hour for Investigations
4	No remote monitoring services activated		



## WEB BASED MONITORING



## DASHBOARD PAGE

Features	Benefits
<ul style="list-style-type: none"> <li>Snapshot of current network health</li> </ul>	<ul style="list-style-type: none"> <li>View the signs performance over time which is ideal for spotting trends and investigating issues</li> </ul>
<ul style="list-style-type: none"> <li>Individual faults are colour coded as well as being date and time stamped</li> </ul>	<ul style="list-style-type: none"> <li>View one fault or many, all on the one graph and customise the diagnostic view to suit your investigations</li> </ul>
<ul style="list-style-type: none"> <li>Clear summary of the signs' entire details including sign ID, location, associated school, activation times and calendar details</li> </ul>	<ul style="list-style-type: none"> <li>All the important information is in one place with no need to view multiple screens</li> </ul>
<ul style="list-style-type: none"> <li>Quick and easy tab access to sign programming area plus events, system and request logs</li> </ul>	<ul style="list-style-type: none"> <li>Multiple screens worth of data are on the same window footprint making both navigation and data analysis clear and easy to view</li> </ul>

## INDIVIDUAL SIGN DATA PAGE

Features	Benefits
<ul style="list-style-type: none"> <li>Signs health is monitored and logged every 10 minutes during activation</li> </ul>	<ul style="list-style-type: none"> <li>Enables quick and direct focus on a sign in fault and prioritisation of groups of signs in fault</li> </ul>
<ul style="list-style-type: none"> <li>Customisable to view signs by fault type</li> </ul>	<ul style="list-style-type: none"> <li>Allows users to have all high priority faults at the top of the list without having to search through mixed fault types. This streamlines the rectification process</li> </ul>
<ul style="list-style-type: none"> <li>Map region able to be displayed by Council Authority, School or Individual Sign</li> </ul>	<ul style="list-style-type: none"> <li>Keeps your options organised with the less relevant choices hidden from view making for a clean, streamlined experience</li> </ul>
<ul style="list-style-type: none"> <li>Drop down tabbed menu for page to page site navigation</li> </ul>	<ul style="list-style-type: none"> <li>Takes you directly to the sign of interest without having to search for it as a separate task. This saves time and ensures you are presented with the right data in one click</li> </ul>
<ul style="list-style-type: none"> <li>Links to individual sign status pages from faults list or map pins</li> </ul>	<ul style="list-style-type: none"> <li>Customisable to allocate any number of colleagues to also view the system and vision on particular signs can even be divided amongst viewers, all without additional licensing fees</li> </ul>